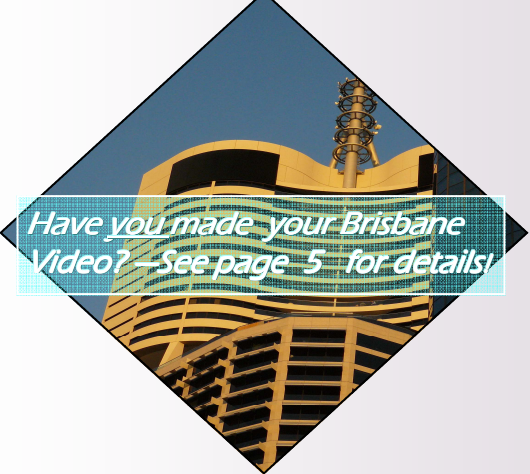




# LAMPHOUSE



## President's Report

Is it time to consider whether the Christmas movie is something we want to continue with or not?

The subject of "Contact" I thought would give a good wide choice for us all to come up with something from our imagination and yet only two people managed to come up with a total of three movies, so making it almost a Non Competition. Please let me know if you want to continue with this extra comp which after all has always only been something to keep our creative juices going during a slack time of year. Lets not let the club down for the other competitions during the year. There is plenty of time now to plan ahead.

- ▶ The Autumn competition is on the 7<sup>th</sup> of April. Any subject, max 15 minutes.
- ▶ The Award movie competition closes on the 7<sup>th</sup> July. Movie Festival will be screened on 1<sup>st</sup> September. This is an open competition which means that other clubs or individuals can submit their movies to be judged along side ours.
- ▶ The Spring competition will be judged on 15<sup>th</sup> September.
- ▶ Then the final of the year with the Movie of the Year competition is in December.

Don Chapman, our Patron, has proposed a one off Special movie which Don and Lillian are sponsoring to the tune of \$50:00. This is to be about **"Brisbane as it is Now"**. Your movies must be brought into the club rooms on Wednesday the 21<sup>st</sup> April, then Don and Lillian will judge them at home and we will have a showing and Presentation on the 5<sup>th</sup> May.

We must all make an effort to show not only Don and Lillian just what we can do but every other member too.

Last year we put together the Ormiston Shadow movie which was a great production where many members worked as a team for a whole day and also had plenty of fun doing it too.

One suggestion for a similar activity this year is to conduct a group shoot at the Leyburn Car races in August. This event is a very exciting round town race with all sorts of ancient and vintage cars and motor cycles taking place through the town of Leyburn near Toowoomba.

<http://www.leyburnmotorsprints.com.au/>

Please let any member of the committee know what you think.

Bruce and Jeanette McDonald have very graciously offered to host a "Movie and BBQ" night at their home on the 17<sup>th</sup> April as a club fund raising event. We have had one of these nights before and it was very successful. So mark it down in your Diary and come along to find out what treasure Bruce can come up with this time.

(Cont. Page 2)



### INSIDE THIS ISSUE:

Autumn Competition Judging on Night Wednesday, 7th April, 2010 7.30pm	<b>2</b>
An Evening of Comedy featuring Fay Finlay 3rd March, 2010 7.30pm	<b>3</b>
How to take A Wedding Video And stay sane! Wednesday 17th March, 2010 7.30pm	<b>4</b>

## President's Report

(Cont from Page 1)

The movies that each member club of FAMM send in for the FAMM Convention are being gathered up by George Way to be sent out for judging to then be shown at the convention that is being held at Noosaville from the 17<sup>th</sup> to 21 May 2010, and ours have been sent off, but don't forget that if you can put together a few 1 Minute movies between now and then.

All you have to do to get them shown at the convention is to either take them there yourself or just give them to some member who is attending. Then your masterpiece will be seen by thousands!

We have a great club so now it's time to get up of that comfortable chair in the lounge at home and attend the meetings. Our QMM Web site contains our Newsletter full of news and activities and a schedule of club events so have a look at [www.qmm.org.au](http://www.qmm.org.au) to keep in touch.

Stewart Gordon  
President QMM



## **Autumn Competition**

- **Open to QMM Members only.**
- **Video with no more than 10% multi media content**

### **Entrants are required to show on disk**

- **Entrant(s) (Group(s) Name**
- **Movie Title**
- **Production Date**
- **Aspect Ratio**
- **Running time**
- **Music statement (Royalty-Free, Original or used under Licence Agreement)**
- **Length is restricted to 15 minutes maximum.**
- **Outside judges to judge on the evening.**
- **Bring videos to Club on Wednesday, 7th April, 2010.**

### **VALE**

We have been informed that Douglas Collom, husband of Myra, and former QMM Club Member passed away on 28th January, 2010.

The members of QMM who knew Douglas, send their sincerest sympathy to Myra and family.

Extract from Email dated 22 January, 2010

From David Fuller

American Motion Picture Society

<http://www.ampsvideo.com/club-talk/club-revival1.htm>

And

Society of Canadian Cine Amateurs

<http://www.sccaonline.ca/>



*'One of the articles in the copy you sent to us, rang another bell: "Declining and aging membership". All so true, but your Club is facing the challenge head-on by creating "hands-on" activities. I'm preaching the same sermon over here, with dubious effect, sad to say. I have been busting a gut, leading, showing, coaxing and involving. As your writer claimed, video club membership, for good reasons, lies within the retired or about to retire community. With our Victoria Club, I keep banging away at scheduling "hands-on" activities each meeting. "Get off your duffs!" But there remains much molasses holding too many members stuck on their bums. You're so fortunate, also, to have access to Repertory drama groups. I can't do much recruiting on my own 140 km to the north. Takes eye-ball to eyeball work and the Club's willingness to help out the actors' group perhaps doing some of menial jobs at their performances. I can't see too many of our "sitting" members, even if we could inspire a minor gold rush, doing more than diddly squat. As the saying goes.*

*I'll send you a copies of AMPS NEWSLETTER and PANORAMA as soon as they float over the ether to me.'*





Wednesday, 3rd March, 2010

7.30pm

Dorothy Hartnett  
presents

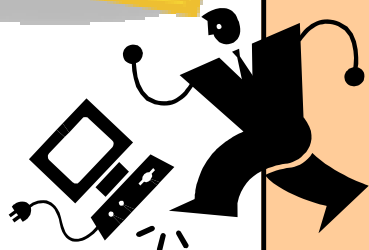
*AN EVENING  
OF  
COMEDY  
FEATURING  
FAY FINLAY*



*Fay Finlay is an active member of QMM and over the years has written many comedy scripts for videos, as well as acted in them. Tonight, we will see a short collection of her work.*



Wednesday, 17th March, 2010 7.30pm



## ***How to take a Wedding Video***

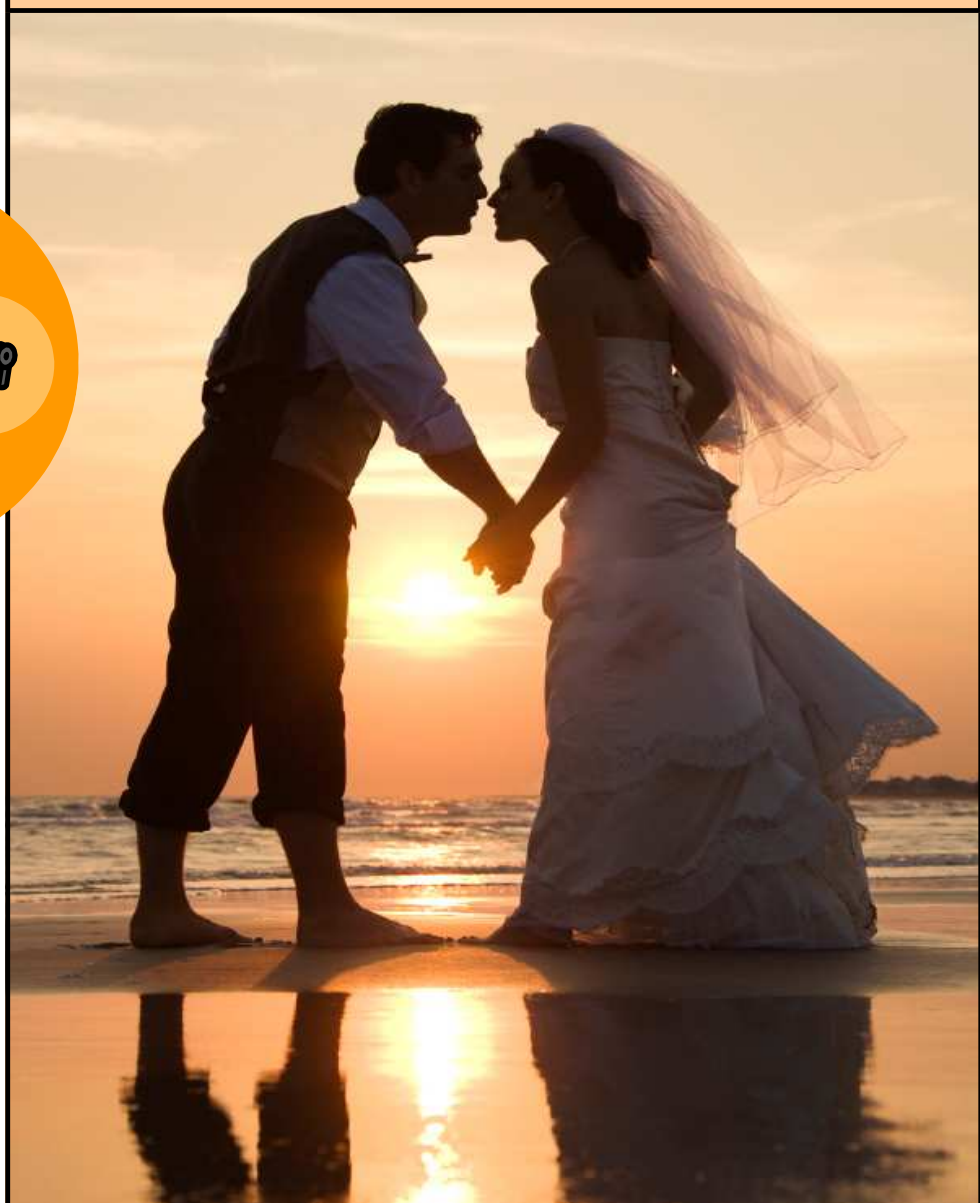
***And stay sane!***

*Presentation By Nigel O'Neill*

*QMM Vice President*

*And*

*Wedding Videographer*





## A Special Video Competition

To be judged by Don & Lillian Chapman  
(Patron of Queensland Movie Makers)

Name of Video: **“Brisbane as it is Now”**

**Prize Money: \$50.00** to winning entry  
(single or group)

### Details of Competition

- Open to QMM Members only.
- Video with no more than 10% multi media content

**Entrants are required to show on disk**

- Entrant(s) (Group(s) Name
- Movie Title
- Production Date
- Aspect Ratio
- Running time
- Music statement (Royalty-Free, Original or used under Licence Agreement)
- Length is restricted to **4** minutes maximum.

**Judging by Don and Lillian Chapman.**

**Closing Date: Wednesday, 21st April, 2010**

**(Entries to be submitted in person on this Club Night)**

**Viewing and Prize Presentation: Wednesday, 5th May, 2010**



# F A M M

**Federation of Australian Movie Makers Ltd**

***FAMM NATIONAL CONVENTION 2010***

*to be held at AUSTRALIS Noosaville  
Queensland from 17th to 21st May, 2010.*

*Have you made your booking?*

*Check this link:*

<http://www.famm.org.au/>



**Put this date on your calendar!**



## *Invitation*

*Barbecue and Film Evening  
For QMM Members and Partners*

*Saturday, 17th April, 2010*

*5.00pm.*

*Cost: \$10.00 p.p.*

*At Bruce and Jeanette McDonald's residence*

*36 Corvette Crescent, Bracken Ridge.*

*RSVP—3261 5447 By 10th April, 2010*

# PC's for Video Editing

By Nigel O'Neill



*Want to know what makes a good editing computer??*

*Nigel O'Neill has taken the guesswork out of the decision making process and demystifies the jargon and terms associated with the hardware.*

## PC's for Video Editing:

This article serves as a general guide to those new to video editing. Your video editing PC should be purpose built for the task, with care taken not only to assemble the right components, but to configure the PC properly as well. Therefore, this article is divided into 2 parts: hardware and software (including tuning).

## The PC:

The personal computer or PC is an eco-system of computer parts that work in harmony. The humble PC has come a long way from being a souped up word processor. In the last ten years, falls in the price of technology as well as the advances in software engineering has made it possible to bring video editing to the masses. Once considered the domain of the video production house, most consumers today are spoiled for choice when it comes to video editors from Avid, Sony, Adobe, Edius and Corel (Ulead), to name a few.

As a general rule of thumb, the serious video editor should consider dedicating a PC for video editing, with a second PC for general use such as email, word processing and graphics work. The performance of your editing machine is governed by your choice of components. Let's start with the CPU.

## CPU:



This is the 'brains' of your computer. The Central Processing Unit or CPU is the primary component that carries out a computer's functions. Although the CPU itself looks like the picture on the left, when installed, it will typically be obscured by the cooling Fan assembly (below left).

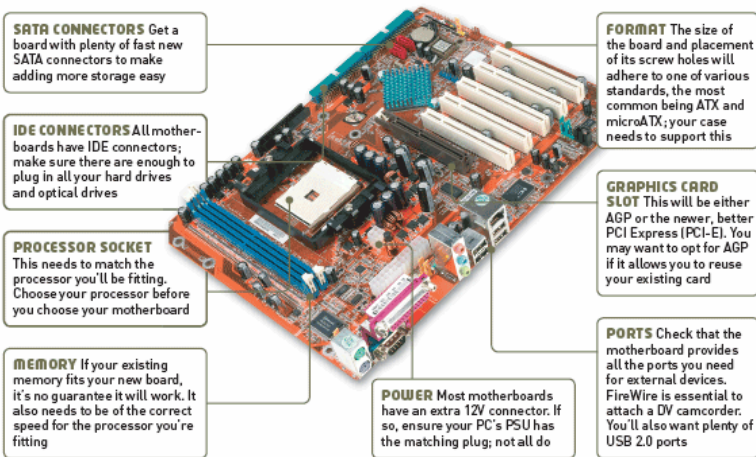


The main industry powerhouses are AMD and Intel, with the latter being preferred due to its better price to performance ratio. Some suggested processors for video editing include the AMD Phenom II, Intel Nehalem i7 or i5, Intel Core2Duo and Intel Quad Core. The quad core and Nehalem processors from Intel are generally preferred by video editors, with Core2Duo preferred by enthusiasts due to its ability to over clock (read: void your warranty!). Buy the fastest processor you can afford, as it is the component that will be doing most of the grunt work.

(cont Page 8,9,10)



## Motherboard:



Your choice of motherboard is equally important. Although there are a number of board makers out there, those considered most reliable for video editing come from companies such as Intel, ASUS and Gigabyte. Although there are other brands such as MSI and Foxconn, they tend to cater for the gamers market. There is nothing stopping you from using them if that is all your budget will allow, but be aware that such boards may not be stable under load.



### Main Logic

1. CPU socket
2. Chipset Northbridge
3. Chipset Southbridge

### Memory

4. DRAM Channel 1
5. DRAM Channel 2

### Drive Interfaces

6. Floppy Drive
7. ATA100/ATA133
8. Serial ATA

### Expansion Slots

9. PCI (32-bit, 33MHz)
10. PCI-Express x16
11. PCI-Express x1

### Power Connectors

12. 24-pin ATX Power
13. 8-pin ATX12v Power
14. Supplemental Graphics Power

### Onboard Features

15. CPU Power Regulators
16. IEEE1384 FireWire Controller
17. Audio Codec
18. Network Controller PHY

### BIOS

19. BIOS ROM (CMOS)
20. BIOS Clock Battery

When purchasing your motherboard it is essential to match it to one that is compatible with your CPU. Also note that not all motherboards are created equal, with some having more features than others, such as onboard sound, onboard video, SATA connectors and USB connectors. Before making your purchase, you need to consider:

- What CPU am I attaching?
- How many SATA drives am I intending to connect?
- How many IDE drives am I connecting?
- How many USB ports do I need?
- What RAM is compatible with my board, how much RAM do I need, and at what speed will it run?
- Do I need onboard video and sound?
- Do I need onboard RAID?
- How big is the actual motherboard? If it is too big, it will not fit in your case.
- What video card can I connect to it? PCI, AGP or PCI-E.

As a general rule of thumb, the more bells and whistles you have/want, the higher the cost of the motherboard.

(cont Page 9,10)



## **Power Supply:**



Often little thought is given to this component. Oftentimes, you start with a small PC not really intended for video editing, and add more RAM, a graphics card and more drives, without consideration as to what impact it is having on the power supply. The job of a power supply is not only to provide power, but deliver clean power as well. Cheaper power supplies generally do not perform well under full load that can result in unexplained system crashes and blue screens of death, especially during video rendering.



There are power supply calculators on the Internet that can help you determine how much power your components need. As a general rule of thumb, use a quality power supply of 650W and above. Consider brands such as Antec or Thermaltake. The black power supply above is called modular as it allows you to connect as many or as few connectors as you need. The power supply on the left is typical of most found in budget PC's today with a single bunch of cables coming out from the unit. The benefit of the modular power supply is the ability to minimize cable clutter that can impede airflow inside your computer.

## **RAM:**



RAM or Random Access Memory is a form of volatile computer data storage. It takes the form of integrated circuits that allow stored data to be accessed by computer programs such as your video editing package, the choice of which will depend on your motherboard. Often, many manufacturers will publish brands of memory their boards have been tested with. It is not wise to ignore their recommendations and go with a generic brand instead, as it can result in unexplained system crashes and blue screens of death.

32-bit editions of Windows XP will only recognize up to 4GB of installed RAM, whilst Windows 64-bit editions will recognize 128 GB of installed RAM, although you will be hard pressed to find a consumer motherboard that will handle 16 GB of RAM. If you are using Vista, you should consider installing 6GB of RAM or more.

### Tips:

- Don't mix RAM speeds—you will encounter stability and performance issues.
- Don't mix RAM brands, even if they are the same speed—try to match your RAM.
- Vista users can use a feature called 'Readyboost' which allows you to extend system memory to use USB memory sticks. I would only use this in dire situations if you are memory starved, as the access speed of USB is significantly slower than that of installed RAM sticks.

(cont Page 10)



### Case:



The case is an oft overlooked component in a PC, but is important as a poor case design can impact on the overall cooling of your components if poorly implemented. Poorly placed baffles or crowded designs can create hot spots in your PC which can reduce the life span of the components within.

When choosing your case, you also need to consider how many internal hard drives and disc burners you intend to install. It is not unusual for the typical editing PC to have 5 hard drives and a disc burner.

Good case designs often incorporate 120mm fans in the drive bay fascia in order to provide a cooling airflow over your hard drives. Some cases include drive caddies or quick release mechanisms, making it easy to swap out drives. Another handy feature in some cases is front mounted I/O ports, allowing you to hook up head phones, speakers, fire wire and USB devices via the front panel—no more crawling around the back of your PC!

### Hard Drives:



Hard drives today come in a number of flavours from EIDE, SATA to SSD. The performance of a drive is generally governed by its spindle speed (measured in RPM) and data transfer rate, measured in Mbit per second. Laptop hard drives spin at 4,200 RPM due to size limitations (2.5 inches) and to keep heat down, but that also means it takes longer to access your data. Most consumer EIDE and SATA drives spin between 7,200 RPM and 10,000 RPM (Western Digital Raptor), and there is even a SCSI model that spins at 15,000 RPM (Western Digital Cheetah). All have a 3.5" form factor. SATA drives have all but replaced EIDE Drives.



The connector of an EIDE drive consists of a rectangular block of 40 pins, whereas SATA connectors have an 'L' shape socket. The latest drives on the market are Solid State Drives or SSD's which contain no moving parts. It is essentially an enclosure that contains banks of persistent solid state memory chips.

Unlike RAM, which is volatile, SSD drives retain their information even when the PC is switched off. For most consumers today, SATA drives still represent the best price to performance ratio, with prices around 21 cents or less per gigabyte, compared to around \$4.00 per gigabyte for SSD. The main benefit of SSD's is silent blazingly fast performance, no moving parts with next to no heat output.

Despite not having any moving parts, SSD drives can eventually fail as the memory cells the data is written to has a finite number of write-erase cycles.

Video editors today have never had it so good when it comes to inexpensive storage. 10 years ago, storage was probably the most expensive element in a video editor's tool kit. Drives of 1 TB or 1,000 gigabytes can now be purchased for around \$120. That sort of capacity 10 years ago would have been the deposit on a small home!

Given the fall in disk prices, there is no excuse to not take advantage of low prices and high capacities. A video editing PC should have at least 3 hard drives:

- C: - contains your operating system and programs
- G: - contains your video captures/ project files
- H: - contains your output files

***(PC's for Video Editing—Hardware—will continue in March Lamphouse***



## QUEENSLAND MOVIE MAKERS

Website: <http://www.qmm.org.au/>

Queensland Movie Makers. Box 33. Post Office. Alderley.Old .4051

Meetings. Kedron 7.30pm. 1st & 3rd Wednesday/Month  
O.E.S Hall -Cnr Kitchener Road & Bohland St. Kedron.



**QMM** Meets here

Map copied from UBD Brisbane Refidex

### DISCLAIMER

In regard to products, services and/or procedures which are mentioned in this Newsletter, members should determine for themselves the reliability and/or suitability of these products for their own particular requirements. Queensland Movie Makers Club., cannot accept responsibility for any products or service statement made herein and the opinions or comments by contributors are not necessarily the views of the club, its committee, its members or the editor.

### COPYRIGHT

All articles and photos appearing in this Newsletter are subject to Copyright and may not be reproduced in whole or part without the author's consent. Enquiries regarding permission should in the first instance be directed to the Editor, Queensland Movie Makers.

#### Subscriptions.

Single-	\$40 per year
Family—	\$45 per year
Country-	\$15 per year

**QMM Committee Meetings**  
**2nd Wednesday each month**  
**For details phone Stewart Gordon**  
**on 3207 8457**



## QUEENSLAND MOVIE MAKERS COMMITTEE

<b>PATRON</b>	Don Chapman		3256 4696
<b>PRESIDENT</b>	Stewart Gordon	<a href="mailto:sgordon@ozemail.com.au">sgordon@ozemail.com.au</a>	3207 8457
<b>VICE-PRESIDENT</b>	Nigel O'Neill	<a href="mailto:nigelo@iprimus.com.au">nigelo@iprimus.com.au</a>	3841 0302
<b>VICE-PRESIDENT</b>	Col Tretheway	<a href="mailto:tre333@optusnet.com.au">tre333@optusnet.com.au</a>	3203 4724
<b>SECRETARY</b>	Merv Peake		3356 5051
<b>TREASURER</b>	Jeanette McDonald	<a href="mailto:bjmcdonald@bigpond.com">bjmcdonald@bigpond.com</a>	3261 5447

<b>COMMITTEE</b>	[ Bruce McDonald	<a href="mailto:bjmcdonald@bigpond.com">bjmcdonald@bigpond.com</a>	3261 5447
	[ Jan Gordon	<a href="mailto:sgordon@ozemail.com.au">sgordon@ozemail.com.au</a>	3207 8457
	[ Bob Adamson	<a href="mailto:bbadamson@inet.net.au">bbadamson@inet.net.au</a>	3263 1059
	[ Sally Elliot	<a href="mailto:sally.elliott@bigpond.com">sally.elliott@bigpond.com</a>	3865 3046
	[ Joy Tretheway	<a href="mailto:tre333@optusnet.com.au">tre333@optusnet.com.au</a>	Newsletter Ed. 3203 4724

### EX-OFFICIO OFFICERS

<b>COMPETITION SECRETARY</b>	George Way	<a href="mailto:orvid@bigpond.com">orvid@bigpond.com</a>	3848 5233
<b>TROPHIES OFFICER</b>	Bruce McDonald		
<b>VIDEO OPERATORS</b>	[ George Way [ Stewart Gordon		
<b>SOUND SUPERVISOR</b>	[Neville Long [Bob Adamson		3356 4032
<b>PUBLICITY OFFICER</b>	Fay Finlay	<a href="mailto:nodyaf@optusnet.com.au">nodyaf@optusnet.com.au</a>	3397 2315
<b>HOSPITALITY COMMITTEE</b>	[ Jeanette McDonald [ Jan Gordon [ Joy Tretheway		
<b>HISTORIAN</b>	Bob Adamson		

If you wish to submit an article, or to report errors and omissions to this Lamphouse,  
please advise Joy Tretheway

Tel: (07) 3203 4724 email: [tre333@optusnet.com.au](mailto:tre333@optusnet.com.au)

